

Copa d'Europa 2003
Leg 1 - Section 1
Scale 1:100.000



T-GT
G (2xS)
I (2xS)
2

3

St. 2
TC-3-IN
3

1-Sp
1-Su
M-Su
K-Su
Q

7

AK NRG
Münster Süd
10 km

Münster 5 km



Leg 1 - Section 1
Scale 1:100,000

EMSDETTEN

Saerbeck

Ladbergen

GREVEN

Ostbevern



400 02 35' 04 06 08 40' 410 12 14 45' 16 18 420 51' 22 24 55' 26 50g

Minuten 3 km
 Minuten 3 km
 Minuten 3 km

2

3

4

2

1

4

M-Su

K-Su

Q

St. 5

TC-4-IN

St. 15

S

T-GT

U-S

W-S

Y-S

F-S

St. 7-S

DORTMUND-EMS-KANAL

EMIS

Werge

Werge

Werge

Werge

Werge

Werge

Werge

Werge

Werge

Werge

Werge

Werge

Werge

Werge

Werge

Werge

Werge

Werge

Werge

Werge

Werge

Werge

Werge

Werge

Werge

Werge

Werge

Werge

Werge

Werge

Werge

Werge

Werge

Werge

Werge

Werge

Werge

Werge

Werge

Werge

Werge

Werge

Werge

Werge

Werge

Werge

Werge

Werge

Werge

Werge

Werge

Werge

Werge

Werge

Werge

Werge

Werge

Werge

Werge

Werge

Werge

Werge

Werge

Werge

Werge

Werge

Werge

Werge

Werge

Werge

Werge

Werge

Werge

Werge

Werge

Werge

Werge

Werge

Werge

Werge

Werge

Werge

Werge

Werge

Werge

Werge

Werge

Werge

Werge

Werge

Werge

Werge

Werge

Werge

Werge

Werge

Werge

Werge

Werge

Werge

Werge

Werge

Werge

Werge

Werge

Werge

Werge

Werge

Werge

Werge

Werge

Werge

Werge

Werge

Werge

Werge

Werge

Werge

Werge

Werge

Werge

Werge

Werge

Werge

Werge

Werge

Werge

Werge

Werge

Werge

Werge

Werge

Werge

Werge

Werge

Werge

Werge

Werge

Werge

Werge

Werge

Werge

Werge

Werge

Werge

Werge

Werge

Werge

Werge

Werge

Werge

Werge

Werge

Werge

Werge

Werge

Werge

Werge

Werge

Werge

Werge

Werge

Werge

Werge

Werge

Werge

Werge

Werge

Werge

Werge

Werge

Werge

Werge

Werge

Werge

Werge

Werge

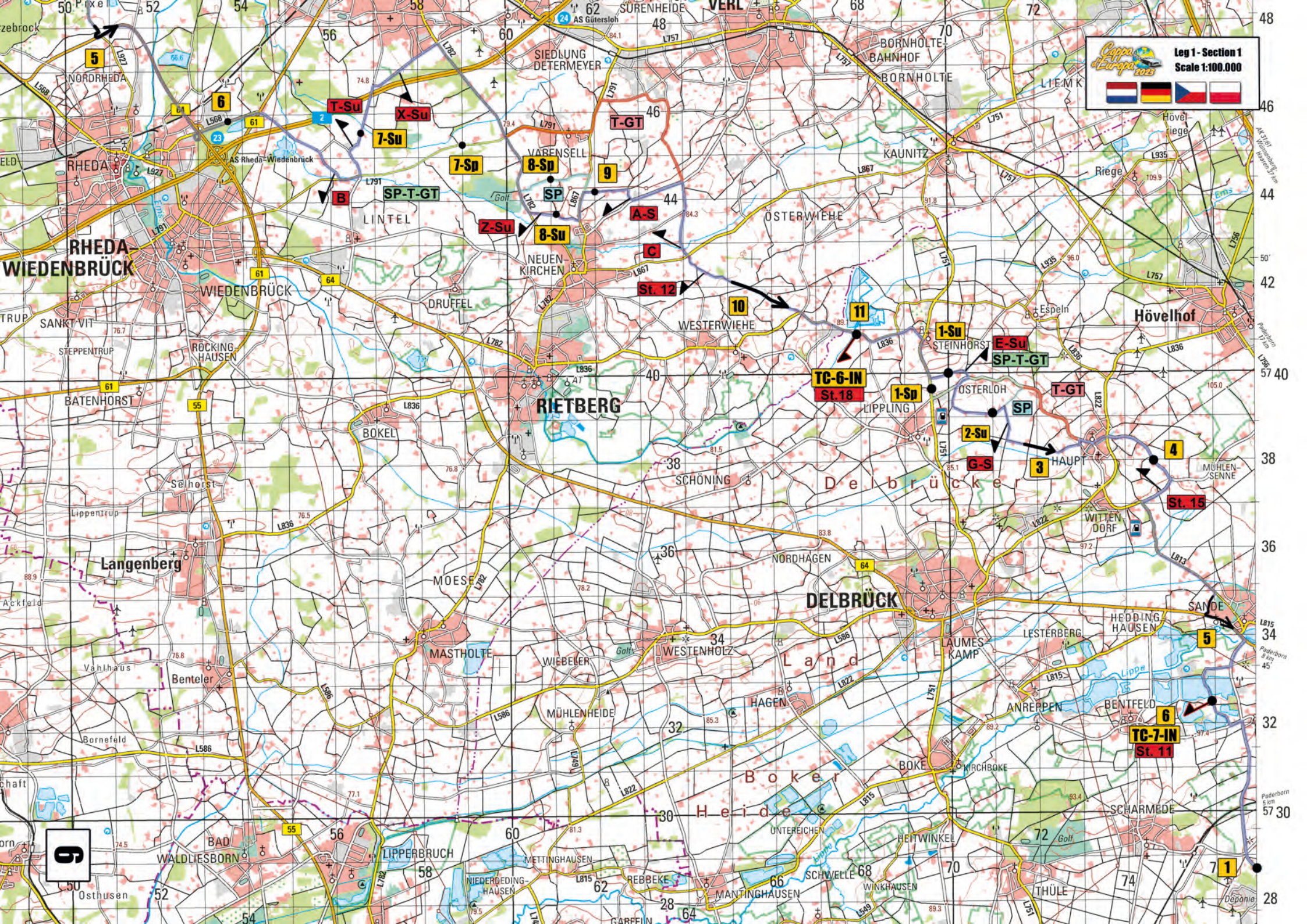
Werge

Werge

Werge

Werge

Werge



Leg 1 - Section 1
Scale 1:100.000






**RHEDA
WIEDENBRÜCK**

RIETBERG

DELBRÜCK

Hövelhof

Langenberg

Land

Boker

Mastholte

Heide

Waldliesborn

Lipperbruch

BOKE

SCHARMEDE

5

6

T-Su

X-Su

7-Su

8-Sp

9

T-GT

SP-T-GT

Z-Su

8-Su

A-S

C

St. 12

10

11

**TC-6-IN
St. 18**

1-Su

E-Su

SP-T-GT

T-GT

SP

2-Su

G-S

3

4

St. 15

5

**TC-7-IN
St. 11**

6

7

1

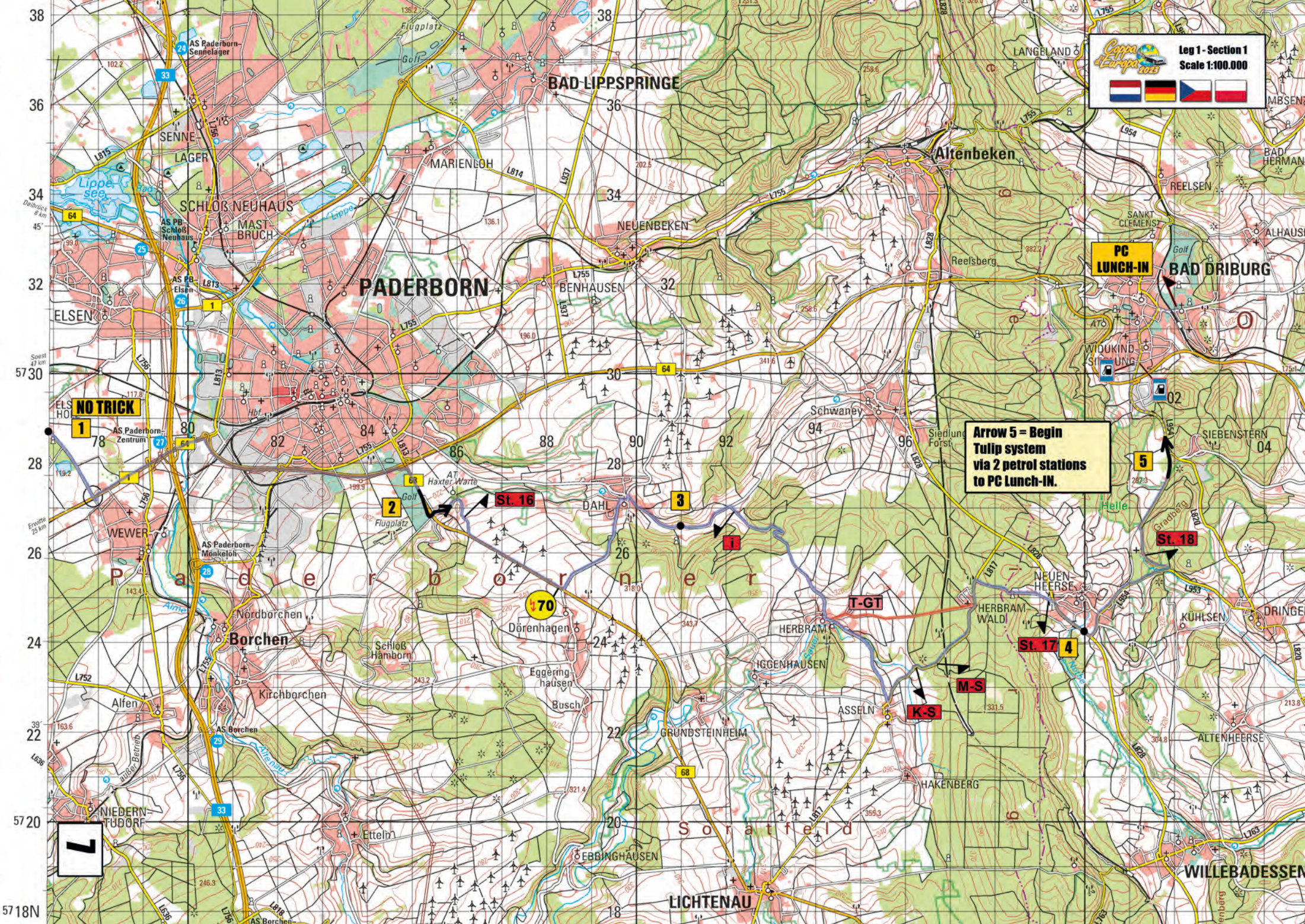
Leg 1 - Section 1
Scale 1:100.000



NO TRICK

Arrow 5 = Begin Tulip system via 2 petrol stations to PC Lunch-IN.

7

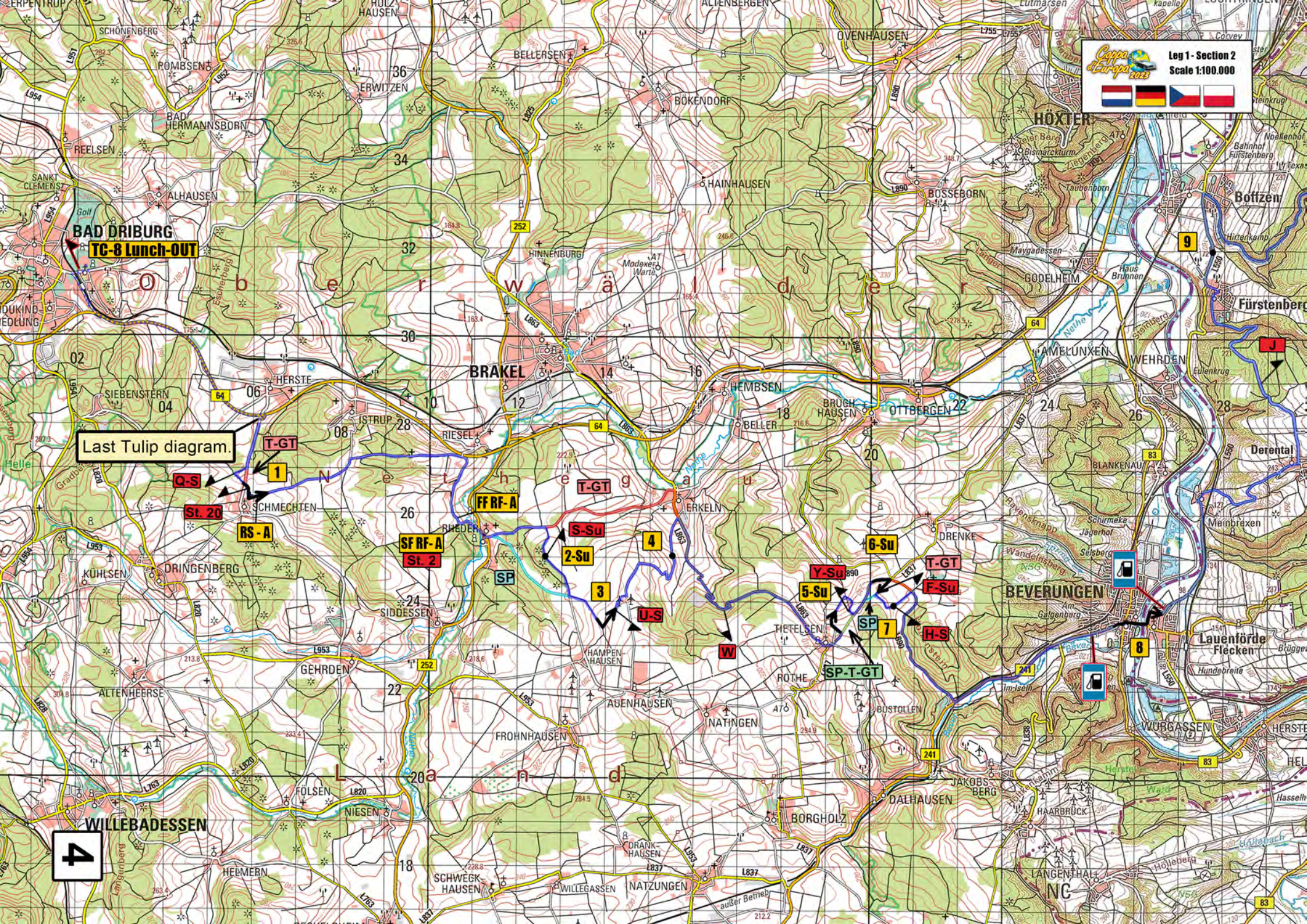


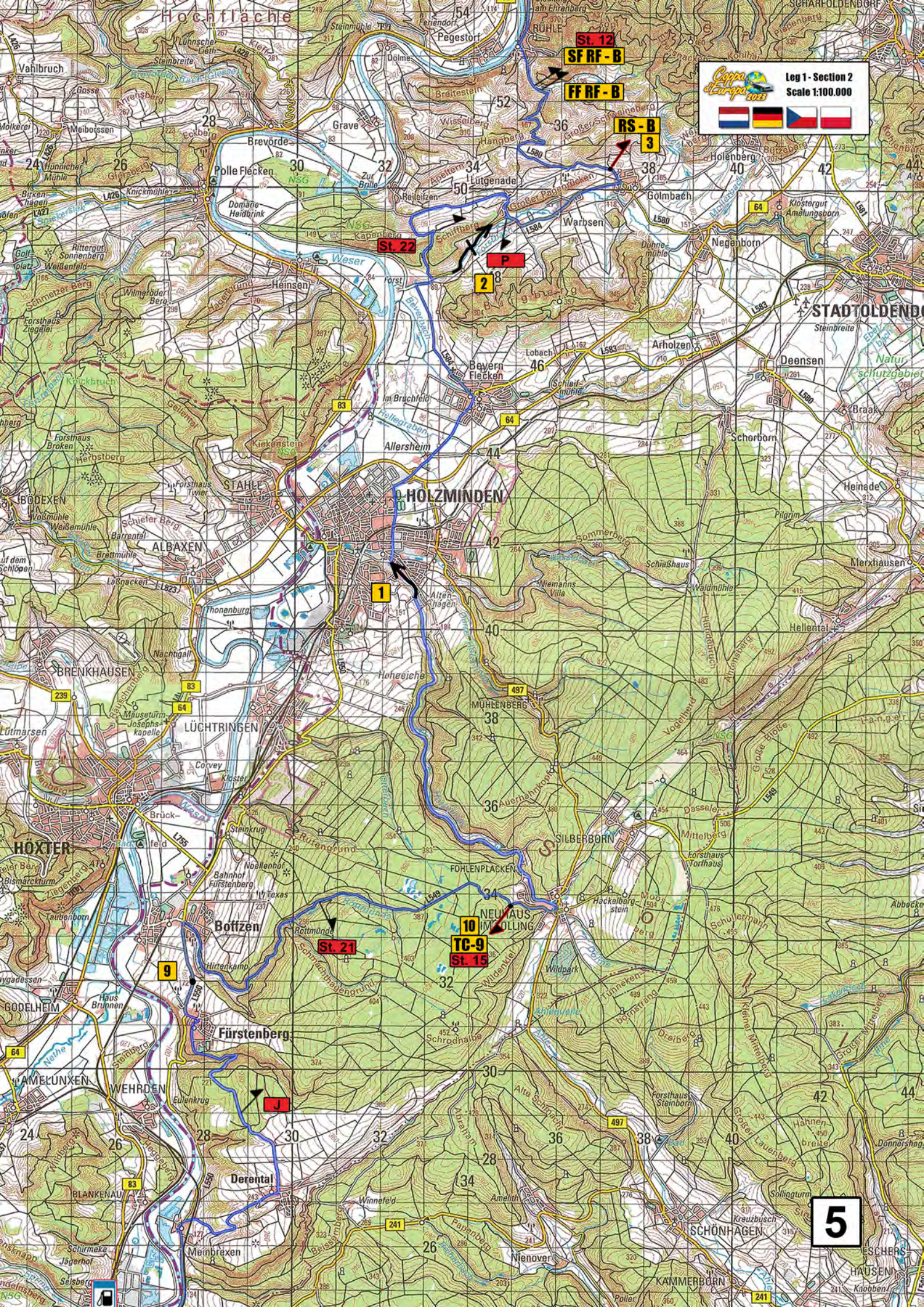


BAD DRIBURG
TC-8 Lunch-OUT

Last Tulp diagram.

4






Leg 1 - Section 2
Scale 1:100.000


St. 12
SFRF-B

FFRF-B

RS-B
3

St. 22

2

P

1

10
TC-9
St. 15

St. 21

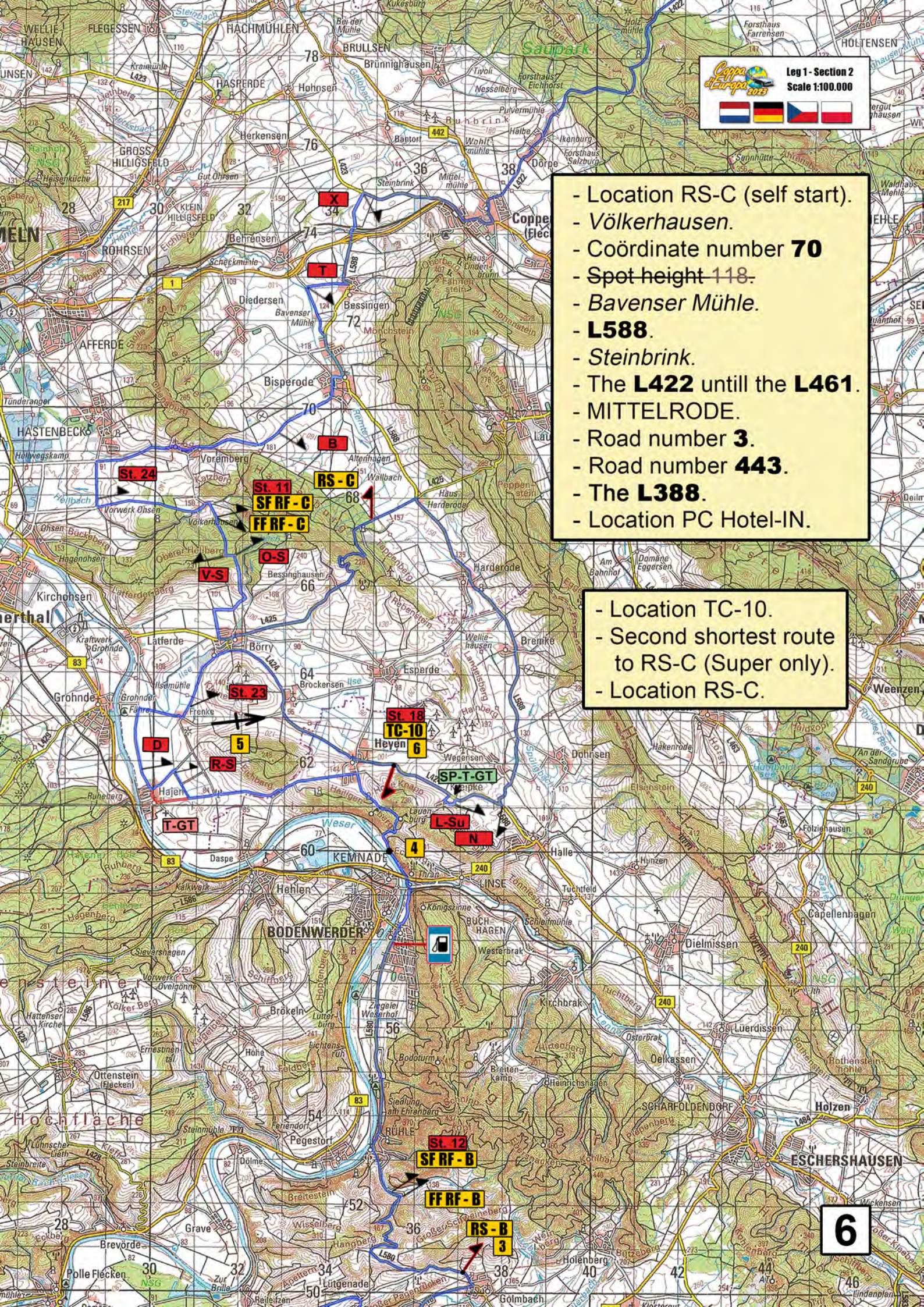
9

J

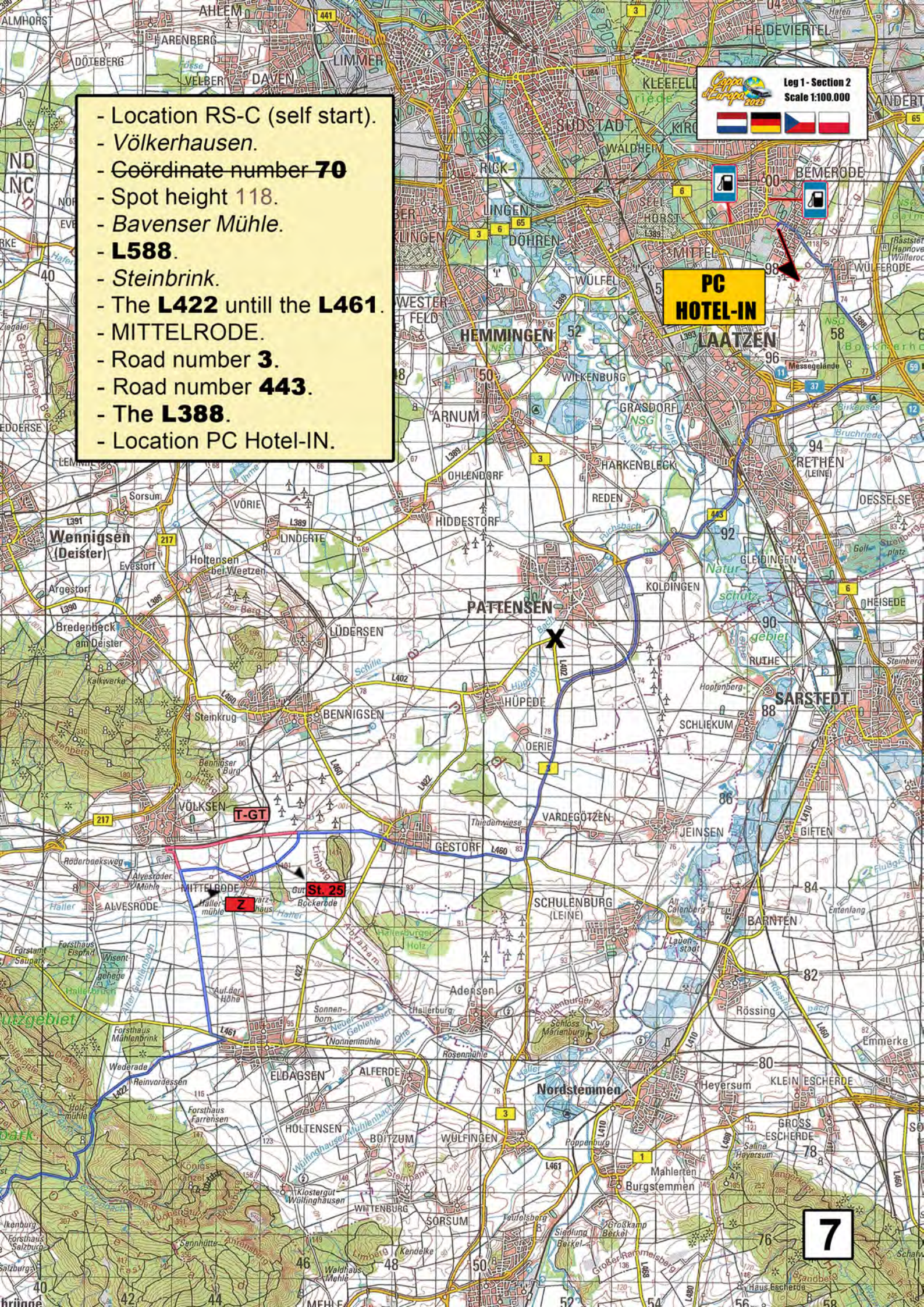
5

- Location RS-C (self start).
- Völkerhausen.
- Coördinate number **70**
- Spot height **118**.
- *Bavenser Mühle*.
- **L588**.
- *Steinbrink*.
- The **L422** until the **L461**.
- MITTELRODE.
- Road number **3**.
- Road number **443**.
- The **L388**.
- Location PC Hotel-IN.

- Location TC-10.
- Second shortest route to RS-C (Super only).
- Location RS-C.

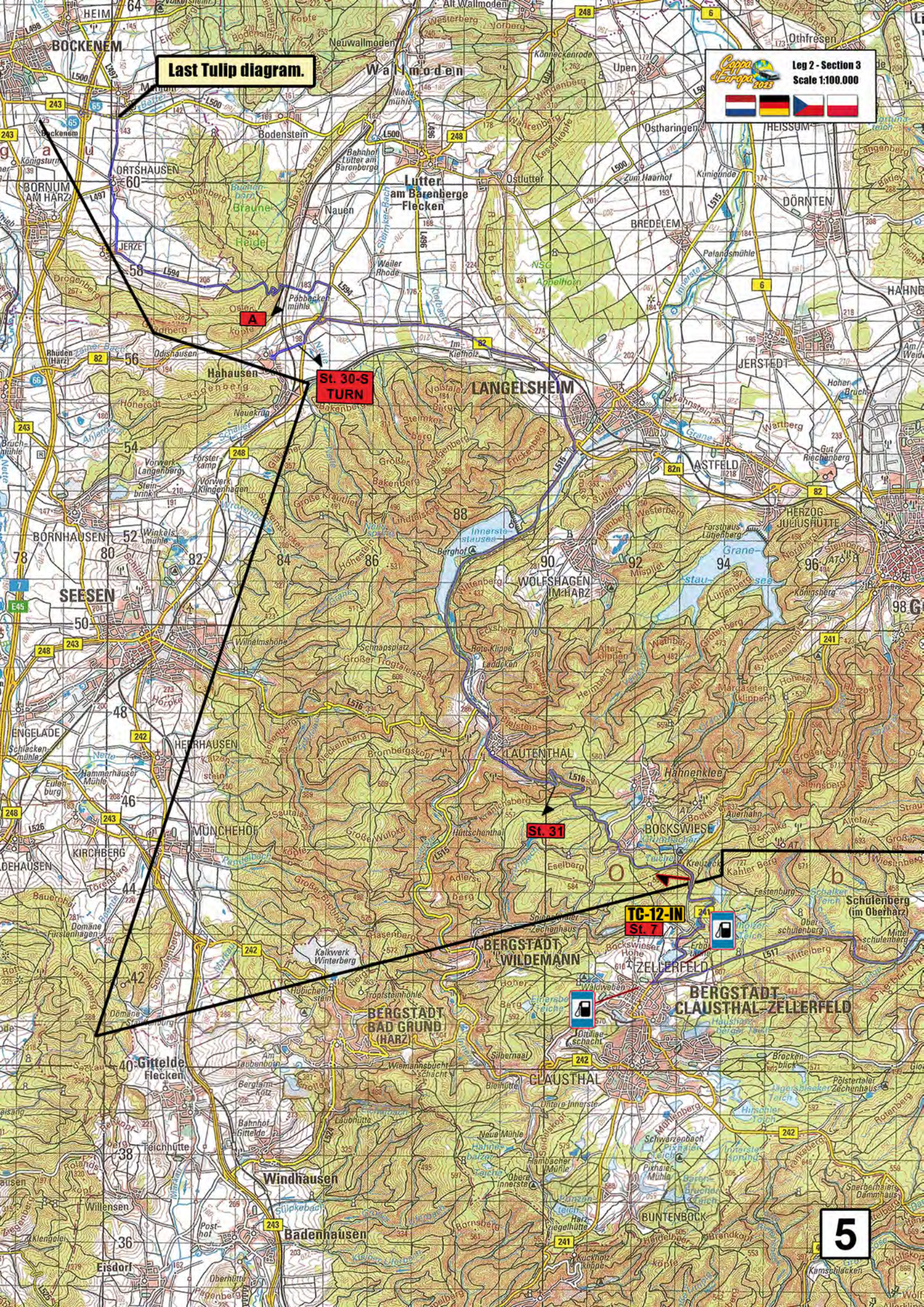


- Location RS-C (self start).
- Völkerhausen.
- Coördinate number **70**
- Spot height 118.
- Bavenser Mühle.
- **L588**.
- Steinbrink.
- The **L422** until the **L461**.
- MITTELRODE.
- Road number **3**.
- Road number **443**.
- The **L388**.
- Location PC Hotel-IN.



Last Tulp diagram.

Coppa d'Europa 2023
Leg 2 - Section 3
Scale 1:100.000



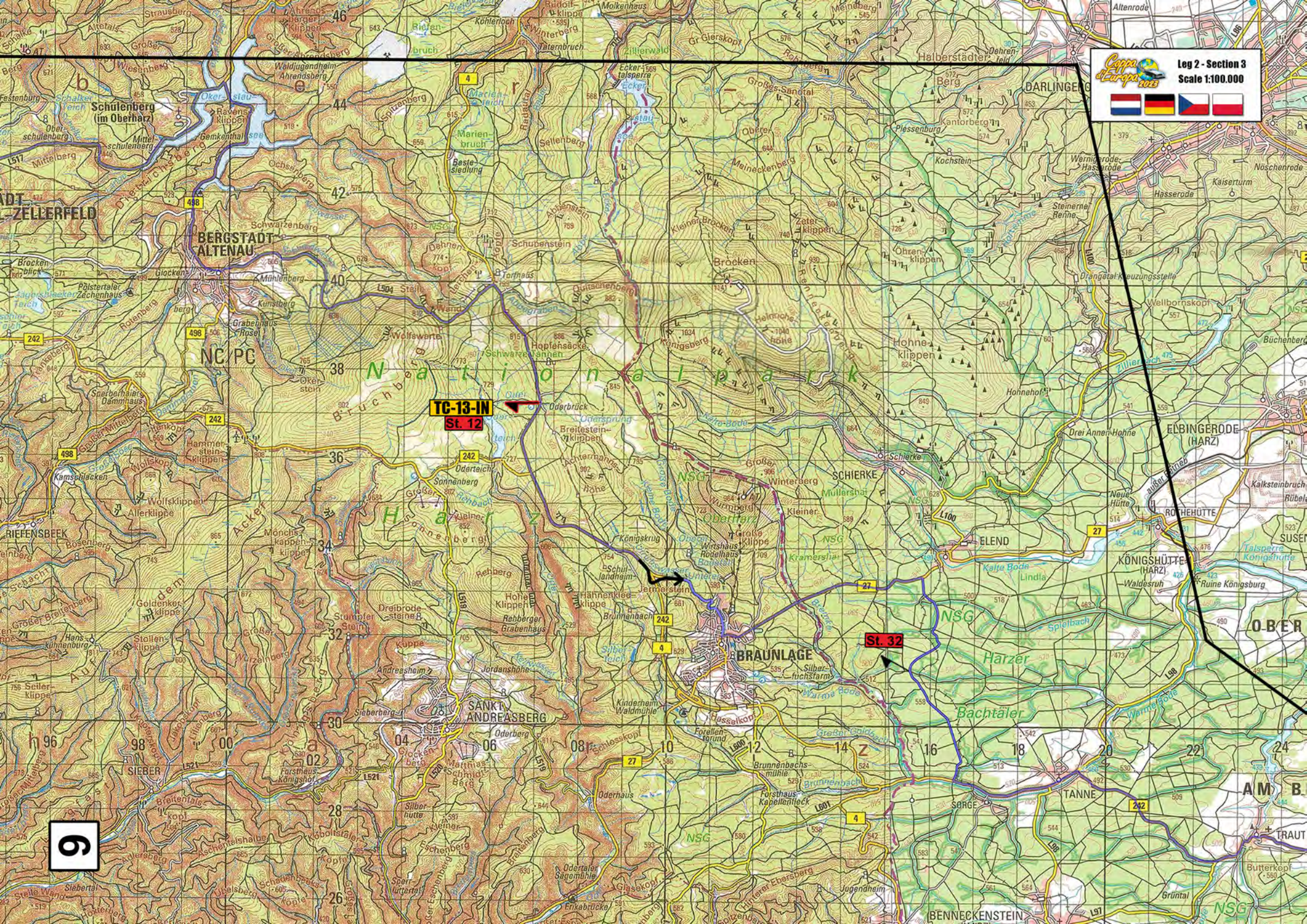
5



9

TC-13-IN
St. 12

St. 32

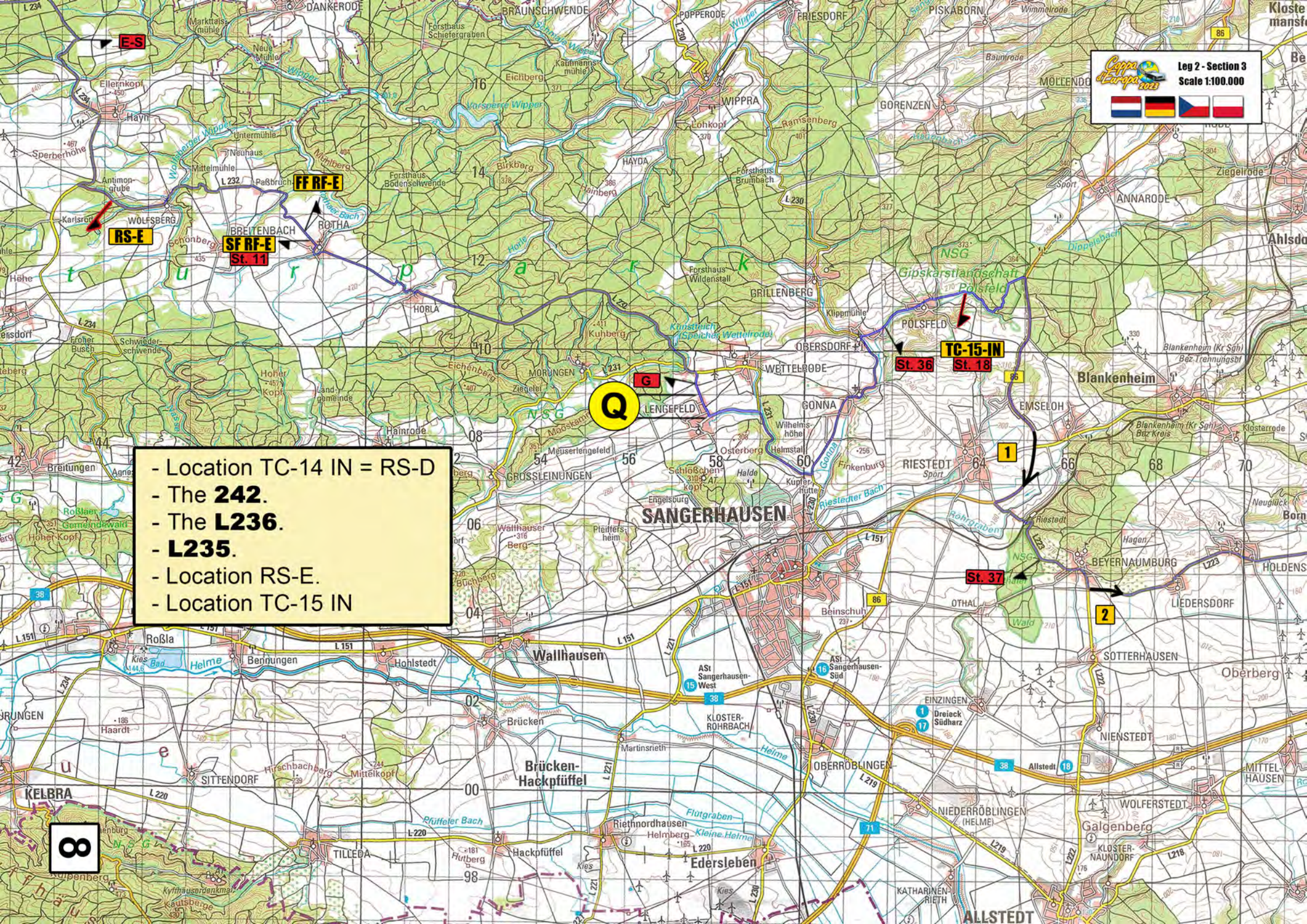




- Location TC-14 IN = RS-D
- The **242**.
- The **L236**.
- **L235**.
- Location RS-E.
- Location TC-15 IN

Q

8





see next page for detail

PC Lunch-IN

6

TC-15-IN

St. 36

St. 18

1

St. 37

2

3

7

5-Su

St. 38-Su

6-Su

K-Su

I-Su

4-Su

SP-T-GT

St. 36

St. 17

St. 18

St. 19

St. 20

St. 21

St. 22

St. 23

St. 24

St. 25

St. 26

St. 27

St. 28

St. 29

St. 30

St. 31

St. 32

St. 33

St. 34

St. 35

St. 36

St. 37

St. 38

St. 39

St. 40

St. 41

St. 42

St. 43

St. 44

St. 45

St. 46

St. 47

St. 48

St. 49

St. 50

St. 51

St. 52

St. 53

St. 54

St. 55

St. 56

St. 57

St. 58

St. 59

St. 60

St. 61

St. 62

St. 63

St. 64

St. 65

St. 66

St. 67

St. 68

St. 69

St. 70

St. 71

St. 72

St. 73

St. 74

St. 75

St. 76

St. 77

St. 78

St. 79

St. 80

St. 81

St. 82

St. 83

St. 84

St. 85

St. 86

St. 87

St. 88

St. 89

St. 90

St. 91

St. 92

St. 93

St. 94

St. 95

St. 96

St. 97

St. 98

St. 99

St. 100

St. 101

St. 102

St. 103

St. 104

St. 105

St. 106

St. 107

St. 108

St. 109

St. 110

St. 111

St. 112

St. 113

St. 114

St. 115

St. 116

St. 117

St. 118

St. 119

St. 120

St. 121

St. 122

St. 123

St. 124

St. 125

St. 126

St. 127

St. 128

St. 129

St. 130

St. 131

St. 132

St. 133

St. 134

St. 135

St. 136

St. 137

St. 138

St. 139

St. 140

St. 141

St. 142

St. 143

St. 144

St. 145

St. 146

St. 147

St. 148

St. 149

St. 150

St. 151

St. 152

St. 153

St. 154

St. 155

St. 156

St. 157

St. 158

St. 159

St. 160

St. 161

St. 162

St. 163

St. 164

St. 165

St. 166

St. 167

St. 168

St. 169

St. 170

St. 171

St. 172

St. 173

St. 174

St. 175

St. 176

St. 177

St. 178

St. 179

St. 180

St. 181

St. 182

St. 183

St. 184

St. 185

St. 186

St. 187

St. 188

St. 189

St. 190

St. 191

St. 192

St. 193

St. 194

St. 195

St. 196

St. 197

St. 198

St. 199

St. 200

St. 201

St. 202

St. 203

St. 204

St. 205

St. 206

St. 207

St. 208

St. 209

St. 210

St. 211

St. 212

St. 213

St. 214

St. 215

St. 216

St. 217

St. 218

St. 219

St. 220

St. 221

St. 222

St. 223

St. 224

St. 225

St. 226

St. 227

St. 228

St. 229

St. 230

St. 231

St. 232

St. 233

St. 234

St. 235

St. 236

St. 237

St. 238

St. 239

St. 240

St. 241

St. 242

St. 243

St. 244

St. 245

St. 246

St. 247

St. 248

St. 249

St. 250

St. 251

St. 252

St. 253

St. 254

St. 255

St. 256

St. 257

St. 258

St. 259

St. 260

St. 261

St. 262

St. 263

St. 264

St. 265

St. 266

St. 267

St. 268

St. 269

St. 270

St. 271

St. 272

St. 273

St. 274

St. 275

St. 276

St. 277

St. 278

St. 279

St. 280

St. 281

St. 282

St. 283

St. 284

St. 285

Coppa d'Europa 2023
Leg 2 - Section 4
Scale 1:100.000

Su: 3rd shortest route from arrow 4 to arrow 5.

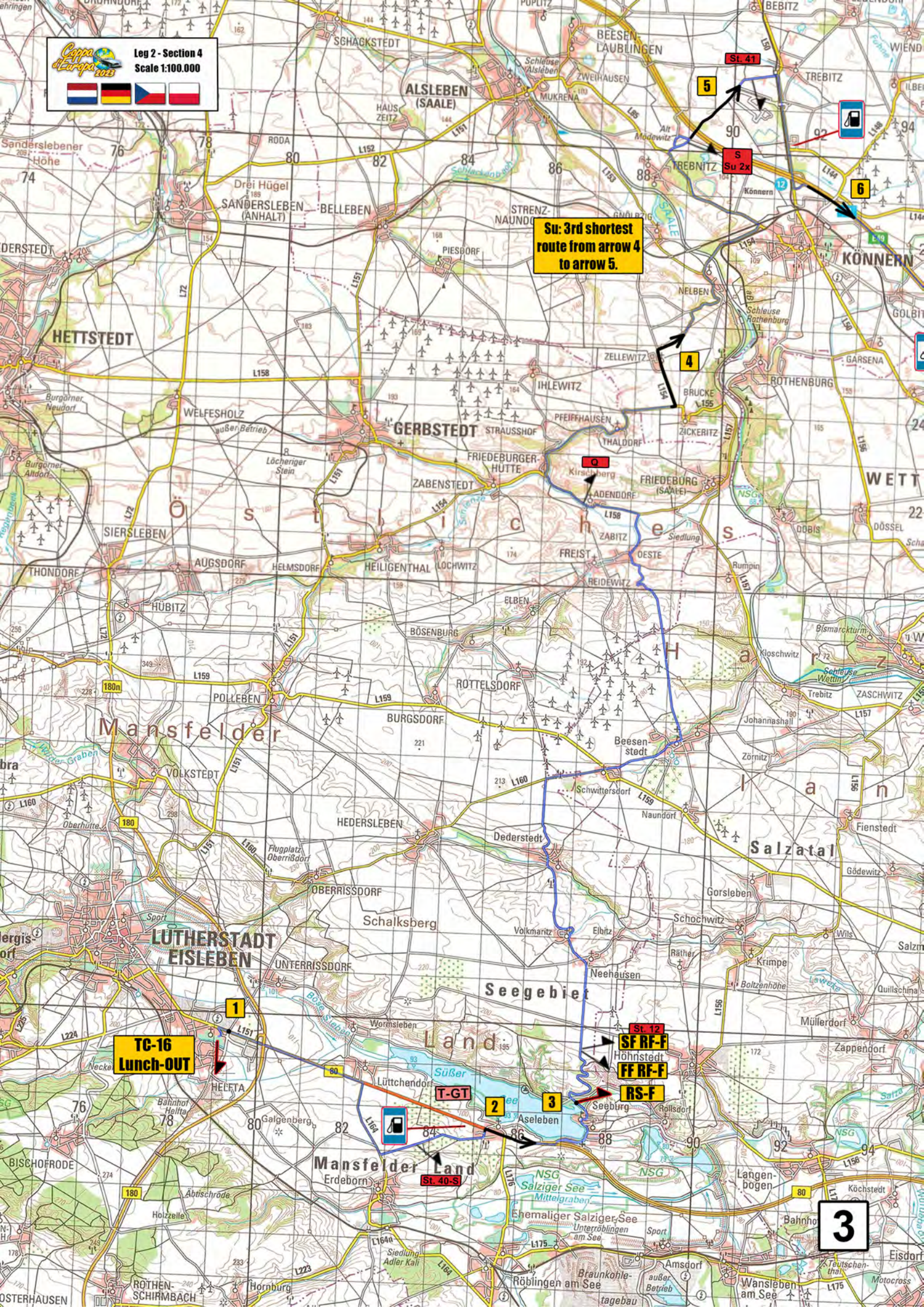
TC-16 Lunch-OUT

St. 12
SFR-F
FFR-F
RS-F

T-G1

St. 40-S

3





**TC-17-IN
at parking
Petersberg.
(follow signs for
passenger cars)**

4

6

7

8

1

2

3



St. 43-S

St. 2

St. 1

T-GT

ROTHENBURG

KÖNNERN

Petersberg

LÖBEJÜN

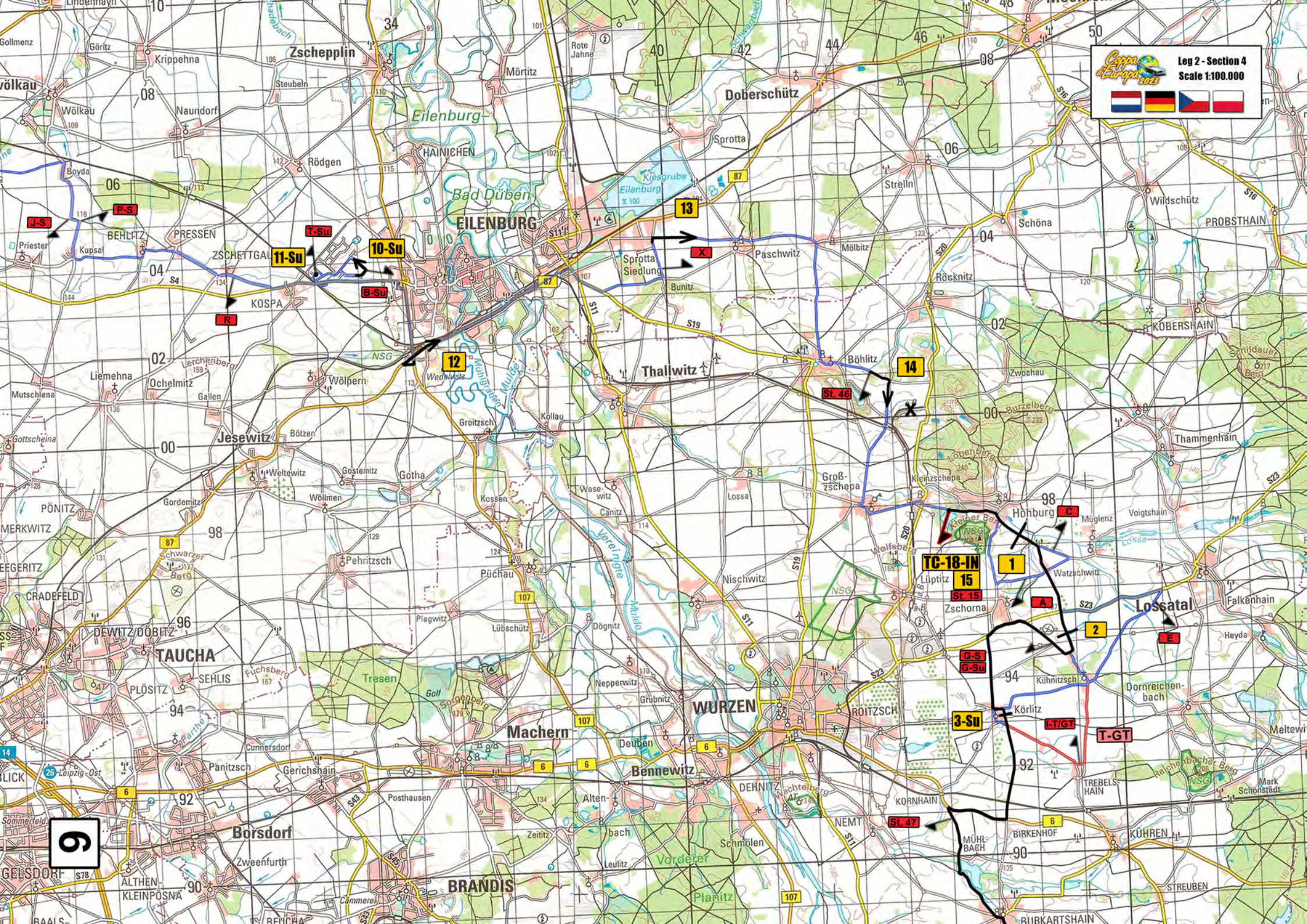
LANDSBERG

LICHES ANHALT
5730
5730
28
28
26
26
24
24
22
22

94 710 96 12 98 14 300 16 02 18 10 04 720

12
S
13





9

TC-18-IN

15

St. 15

G-S

G-Su

3-Su

T-GT

T-GT

St. 47

St. 46

13

14

1

2

11-Su

10-Su

12

B-Su

T-Su

R

J-S

P-S

X

X

A

C

E

E

E

E

E

E

E

E

E

E

E

E

E

E

E

E

E

E

E

E

E

E

E

E

E

E

E

E

E

E

E

E

E

E

E

E

E

E

E

E

E

E

E

E

E

E

E

E

E

E

E

E

E

E

E

E

E

E

E

E

E

E

E

E

E

E

E

E

E

E

E

E

E

E

E

E

E

E

E

E

E

E

E

E

E

E

E

E

E

E

E

E

E

E

E

E

E

E

E

E

E

E

E

E

E

E

E

E

E

E

E

E

E

E

E

E

E

E

E

E

E

E

E

E

E

E

E

E

E

E

E

E

E

E

E

E

E

E

E

E

E

E

E

E

E

E

E

E

E

E

E

E

E

E

E

E

E

E

E

E

E

E

E

E

E

E

E

E

E

E

E

E

E

E

E

E

E

E

E

E

E

E

E

E

E

E

E

E

E

E

E

E

E

E

E

E

E

E

E

E

E

E

E

E

E

E

E

E

E

E

E

E

E

E

E

E

E

E

E

E

E

E

E

E

E

E

E

E

E

E

E

E

E

E

E

E

E

E

E

E

E

E

E

E

E

E

E

E

E

E

E

E

E

E

E

E

E

E

E

E

E

E

E

E

E

E

E

E

E

E

E

E

E

E

E

E

E

E

E

E

E

E

E

E

E

E

E

E

E

E

E

E

E

E

E

E

E

E

E

E

E

E

E

E

E

E

E

E

E

E

E

E

E

E

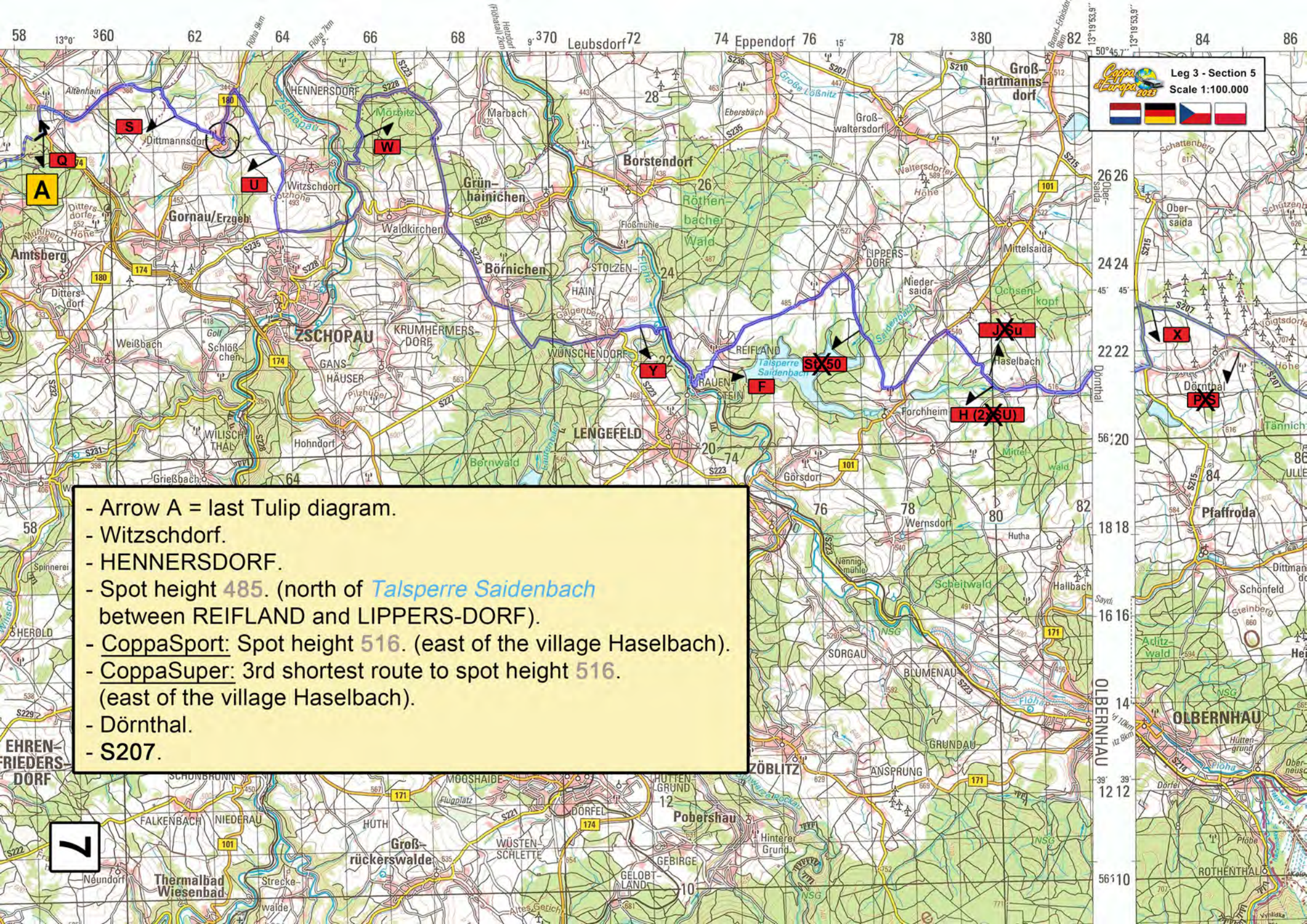
- Location TC-19-IN.
- RAGEWITZ.
- Point A.
- MOTTER-WITZ.
- Location TC-20-IN.

- Location TC-20-IN.
- Spot height 256.
- DITTMANN'S-DORF.
- Theesdorf.
- The o of Zschoppelshain.
- 2nd shortest route to FRANKENAU.
- Spot height 325.
- Location Begin Tulip System.



- Location TC-20-IN.
- Spot height 256.
- DITTMANNNS-DORF.
- Theesdorf.
- The o of Zschoppelshain.
- 2nd shortest route to FRANKENAU.
- Spot height 325.
- Location Begin Tulip System.

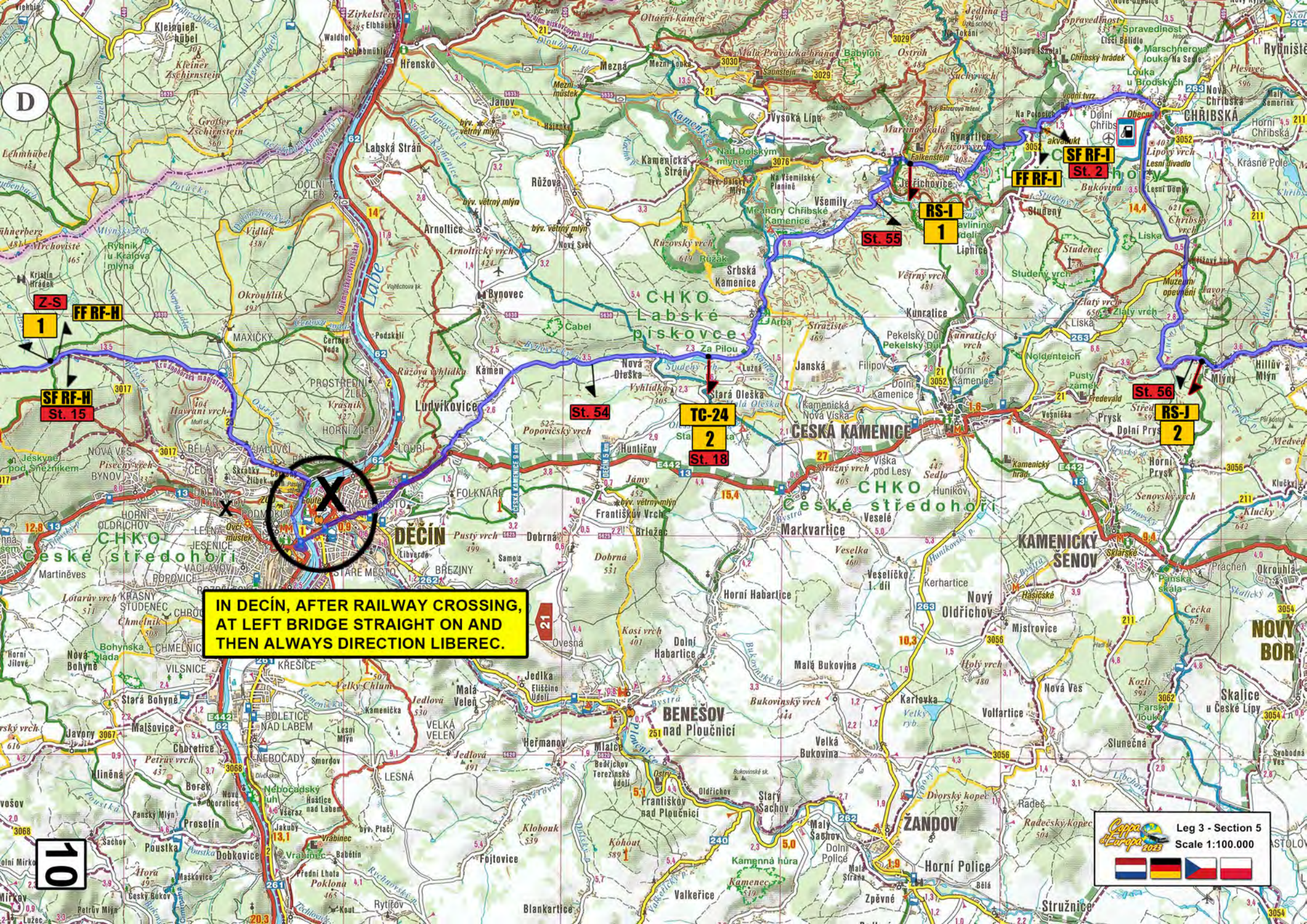
Begin Tulip system via 2 petrol stations to PC-Hotel-IN.



- Arrow A = last Tulip diagram.
- Witzschdorf.
- HENNERSDORF.
- Spot height 485. (north of *Talsperre Saidenbach* between REIFLAND and LIPPERS-DORF).
- CoppaSport: Spot height 516. (east of the village Haselbach).
- CoppaSuper: 3rd shortest route to spot height 516. (east of the village Haselbach).
- Dörnthal.
- S207.

7

- Location RS-G.
- HIRSCH-SPRUNG.
- Point 1.
- Location TC-23. (on parking motorway 17 / E55; follow signs for passenger cars).
- Vertical coordinate line 28.
- Location RS-H.



IN DECÍN, AFTER RAILWAY CROSSING, AT LEFT BRIDGE STRAIGHT ON AND THEN ALWAYS DIRECTION LIBEREC.

1

SFRF-H

St. 15

1

Z.S

1

1

1

1

1

1

1

1

1

1

1

1

1

1

1

1

1

1

1

1

1

1

St. 54

TC-24

2

St. 18

2

2

2

2

2

2

2

2

2

2

2

2

2

2

2

2

2

2

2

RS-1

1

1

1

1

1

1

1

1

1

1

1

1

1

1

1

1

1

1

1

1

1

1

1

1

1

1

1

1

1

1

1

St. 56

RS-2

2

2

2

2

2

2

2

2

2

2

2

2

2

2

2

2

2

2

2

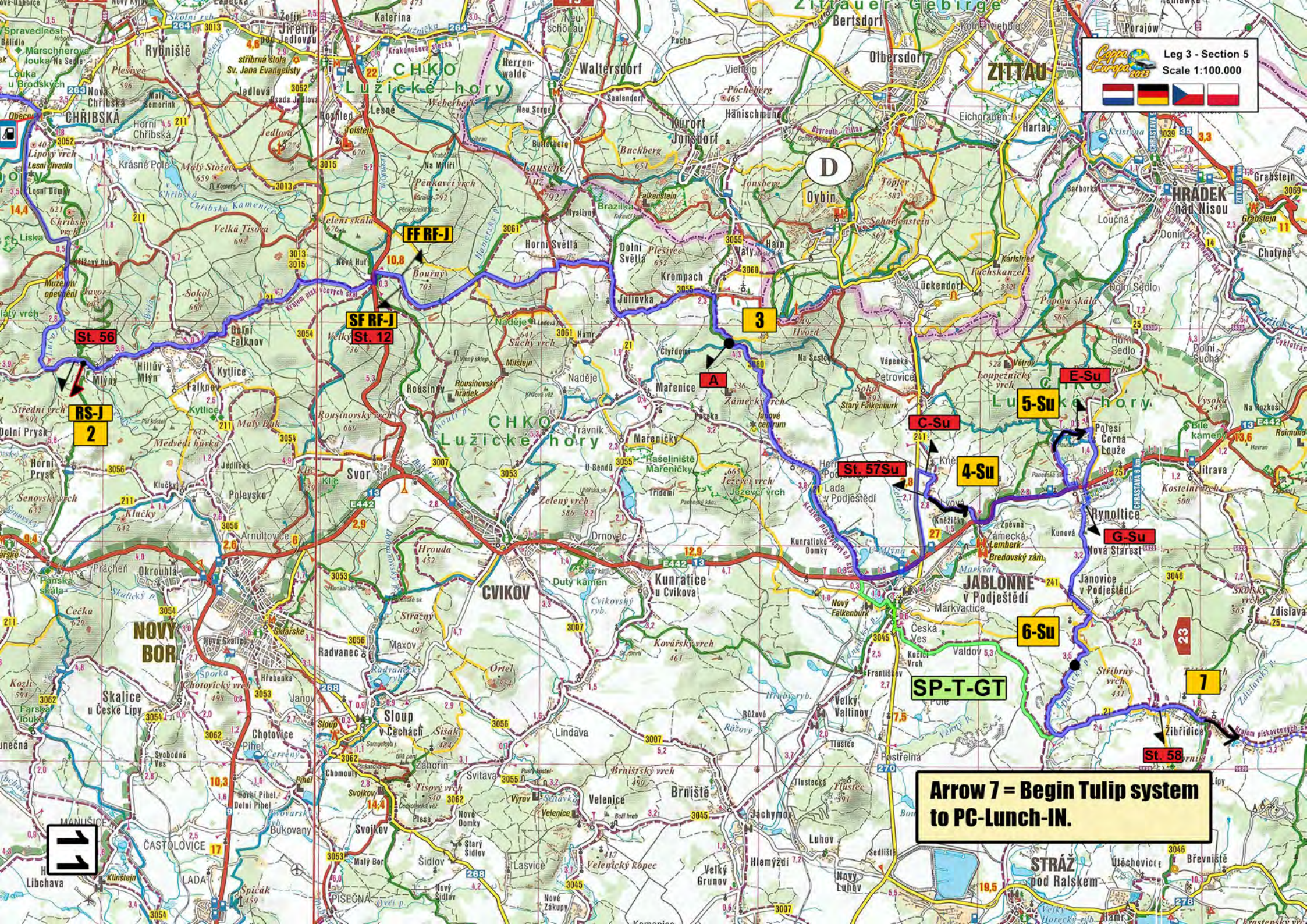
2

2

2

10

Leg 3 - Section 5
Scale 1:100.000



RS-J
2

SFRF-J
St. 12

3

5-Su

4-Su

6-Su

7

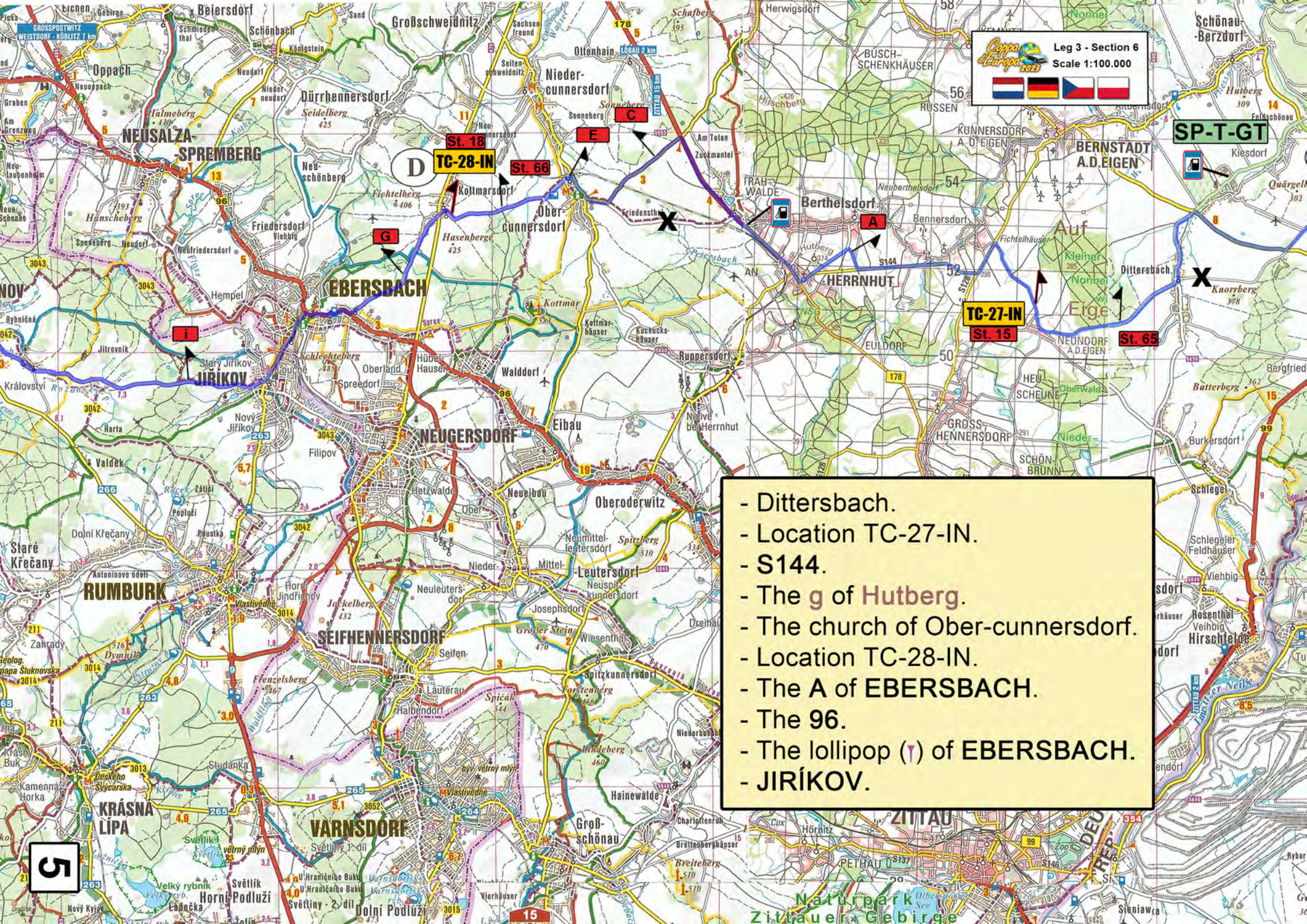
Arrow 7 = Begin Tulip system to PC-Lunch-IN.

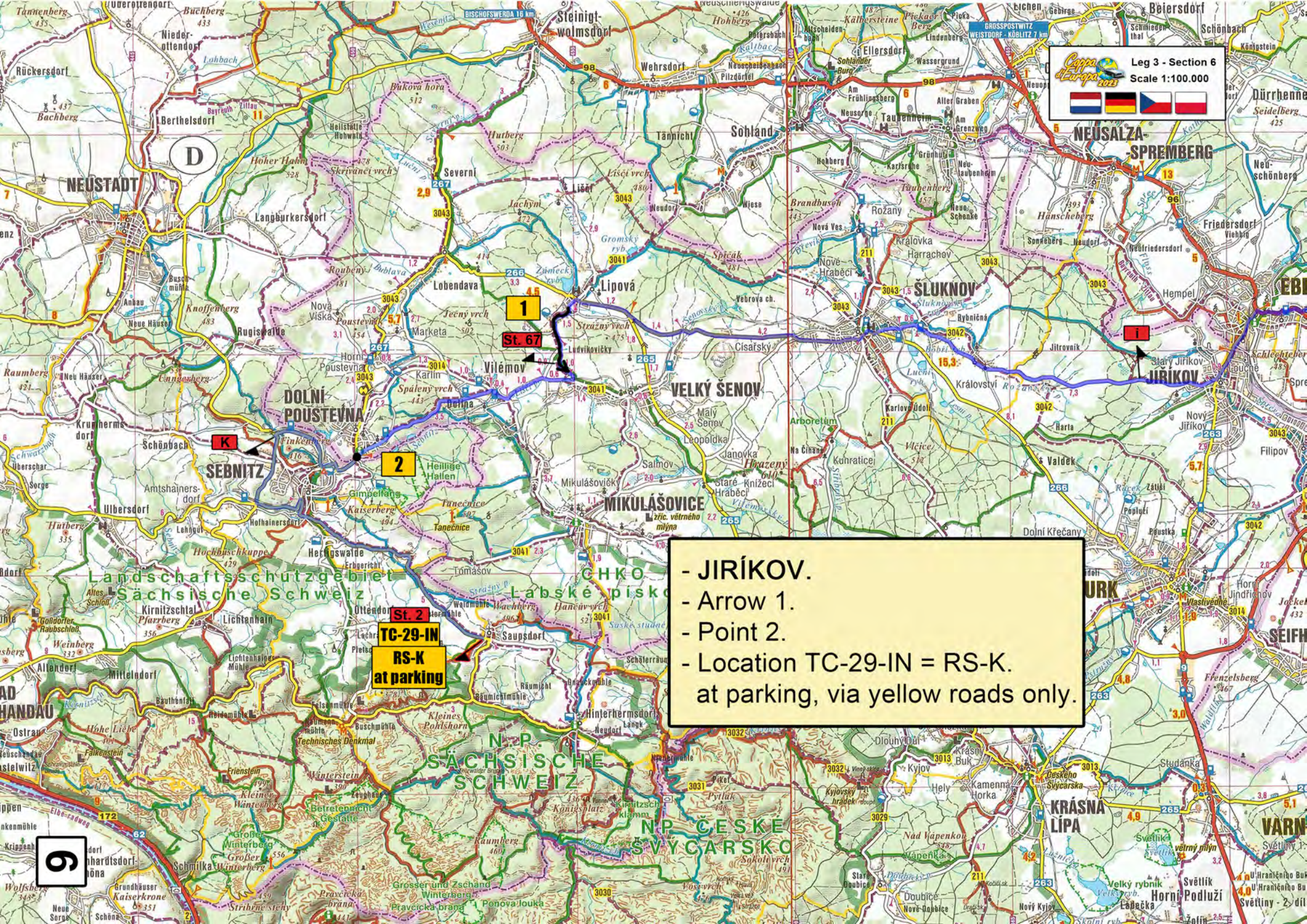
- Arrow 1 (=last Tulip diagram; no trick!).
- CoppaSuper only: The 22 (yellow road).
- CoppaSuper only: Filipov.
- Lollipop (Y) in Detrichov.
- CoppaSport only: Kristiánov.
- Distance 3,0.
- CoppaSuper only: Arrow 2.
- Point 3.
- 15,0 km. via lollipop (Y) distances to the lollipop (Y) of Ves (This is 11,2 cm. north of point 3).
- TC-26-IN.
- Reczyn.
- The 99.
- Yellow road until Hagenwerder.
- CoppaSuper only: White road until yellow road.
- Dittersbach.

Arrow 1 is last Tulip diagram (no trick).

Copa d'Europa 2003
 Leg 3 - Section 6
 Scale 1:100.000

- Dittersbach.
- Location TC-27-IN.
- S144.
- The g of Hutberg.
- The church of Ober-cunnersdorf.
- Location TC-28-IN.
- The A of EBERSBACH.
- The 96.
- The lollipop (T) of EBERSBACH.
- JIRÍKOV.





- JIRÍKOV.
- Arrow 1.
- Point 2.
- Location TC-29-IN = RS-K.
at parking, via yellow roads only.

St. 2
TC-29-IN
RS-K
at parking

9



Leg 3 - Section 6
Scale 1:100,000



Start Tulip system.

2

7

1

St.69

Q-S

St.68

SFRF-K St.12

FFRF-K

St.2

TC-29-IN

RS-K at parking

